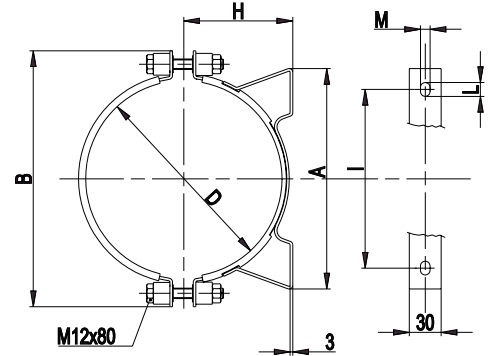
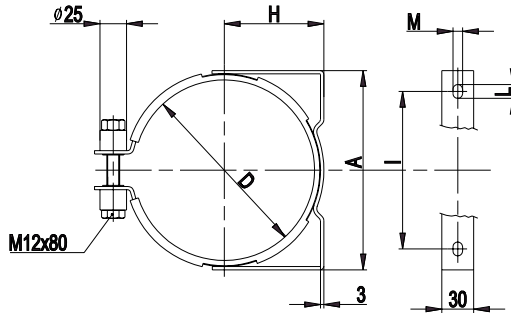


15.1 General

The fixing must be done in such a way as to not lie with outward stresses on the shell or on the accumulator connection. Especially for the horizontal assembling and for the most heavy types is necessary to use fixing equipments (clamps, brackets, etc...) that support the accumulator and avoid dangerous vibrations.

15.2 Construction

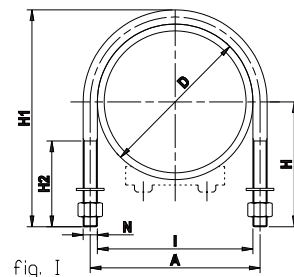
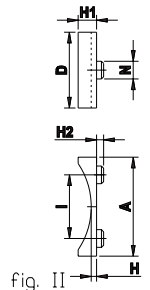
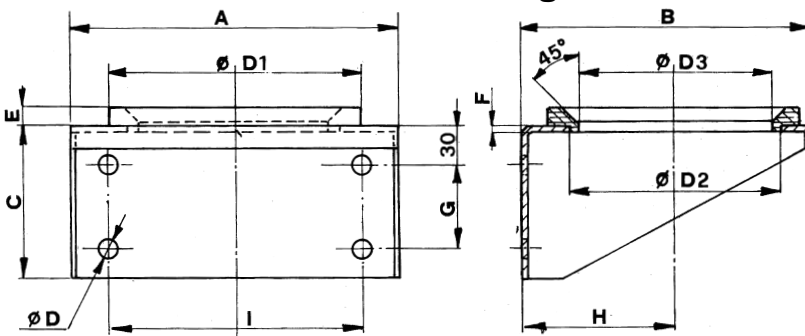
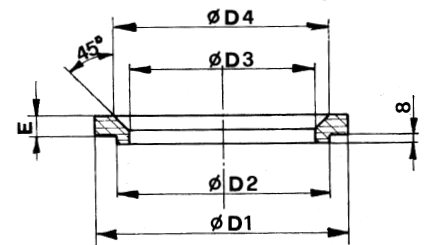
Clamps and brackets are manufactured of galvanized carbon steel but, on request, they can be supplied entirely in stainless steel. The support ring are of nitril rubber 80°Sh. On request can be used other elastomers.

15.3
Clamps

Dimensions and order code

Accumulator Type	Accumulator Max. press. (bar)	Order code	Fig.	Weight (kg)	A	B	D	H	I	L	M
AS 0,7	360 - 550	10155	I	0,65	125	—	89 ÷ 93	53 ÷ 55	90	13	9
AS 1-1,5-3	80 - 360	10157	II	0,85	135	194	114 ÷ 122	66 ÷ 70	100	13	9
AS 5	80 - 360	10250	II	1,1	185	251	167 ÷ 176	95 ÷ 100	146	13	9
AS 10 ÷ 55	30 - 360	10410	II	1,35	298	285	215 ÷ 227	120 ÷ 126	216	20	10

15.4 U-Bolt clamps and plastic pipe saddles
Dimensions and order codes

Accumulator Type	Order code	Fig.	Weight (kg)	A	D	H	H1	H2	I	N
AS1 - 1,5 - 3	11468	I	0.12	123	115	84	149	35	115	M8
ASA 1/4	11475	II	...	75	70	8	17	10	40	15
AS 5	11469	I	1.74	178	168	118	211	45	168	M10
ASA 1	11476	II	...	140	75	8	26	10	90	25
AS 10:55 ASS 10:55	11470	I	2.75	236	220	157	282	60	220	M16
ASA 2.5:15 BB52	11477	II	...	140	75	8	26	10	90	25

U-Bolt clamps

Plastic pipe saddles

15.5
Bracket with ring

Support ring

Dimensions and order code

Accumulator Type	Order code Bracket with ring	Order code Support ring	Weight (kg)	A	B	C	ø D	ø D1	ø D2	ø D3	ø D4	E	F	G	H	I
AS 5	10263		1,5	200	175	90	11	140	120	90		10	3	40	96	140
AS 10 ÷ 55	10363		3,6	260	232	120	17	200	170	150		15	3	70	125	200
AS 1 ÷ 5		10266	0,13					140	120	90	112	10				
AS 10 ÷ 55		10345	0,22					200	170	150	175	15				